



TACTICAL FIBER SYSTEMS

Pioneering Fiber Optic Based Systems

HOTTEST AND AFFORDABLE SYSTEMS



LC Reels

ST Reels



Bullseye™ Reels

Magnum™ Reels

NEW PRODUCTS
AT VALUE PRICES



CamLink® Fiberback
3G and 4K

SALES@TACTICALFIBER.COM | WWW.TACTICALFIBER.COM

Call Today At (877) 777 - 7147

CATALOG #1805

HOW TO ORDER:

Online:

www.tacticalfiber.com

Phone:

Toll Free: (877) 777 - 7147
(USA, Latin American & Canada)

Fax:

Fax: (954) 337 - 4611

Email:

sales@tacticalfiber.com

Corporate Address:

Tactical Fiber Systems, Inc.
1525 N.W. 3rd Street Suite 12
Deerfield Beach, Florida 33442

COST EFFECTIVE ... RUGGED

In the past, the use of fiber technology in video production was limited mainly to broadcasters and producers with deep pockets, but the recent availability of low cost fiber transmission components is a **game changer** that enables us to deliver value priced fiber systems that anyone can afford. TFS strives to make the selection process fast & easy with cost effective cables and combination packages!

TABLE OF CONTENTS:



FOLLOW US ON



Customer Satisfaction

**100 Percent
Guaranteed**



acceptable
payment
methods



VERIFIED & SECURED®
VERIFY SECURITY

... DURABLE



TACTICAL FIBER SYSTEMS

Our Tactical Fiber cables are military grade and perfect for repeat use in the field. They are highly durable, protected by armored stainless steel and kevlar which can withstand heavy foot traffic; and, they are lightweight, compact and easily transportable. TFS tactical fiber cables meet strict testing standards to satisfy a variety of applications - from military use to sporting events to commercial broadcasting.

LC Reels & Accessories	4
ST Reels & Accessories	5
Bullseye Reels & Accessories	6 - 7
Magnum Duo Reels & Accessories	8 - 9
Magnum Quad Reels & Accessories	10
Magnum 16 Fiber Reels & Accessories	11
Magnum Hybrid Reels & Accessories	12
Magnum SMPTE Reels & Accessories	13

Lemo & Blackmagic	14
Blackmagic Converters	15 - 17
Camlink® Converters	18 - 19
Camlink® All-in-One Systems	20 - 22
Small Converters	23
PTZ Camlink®	24
Camlink® Fiberbacks	25 - 28
Fiber Optic Cleaning	29

CUSTOMER SERVICE YOU CAN DEPEND ON US

We value our customers and strive to exceed all expectations. If you have questions, our knowledgeable staff is more than happy to assist you in selecting a product and/or package that suits your specific needs and budget.



TFS DURATAC® CABLES BEAT THE COMPETITION

TFS DuraTAC® Fiber cables are ideal for remote production and broadcasting. Featuring stainless steel armor, they are 10 times stronger than ordinary fiber cables. Every cable is crush resistant and can withstand high impact forces, foot and vehicular traffic..making them an excellent choice for outdoor events and harsh environmental conditions.

Reels are durable, compact, and designed for rapid deployment and retrieval of variable cable lengths up to reel capacity.



LC REELS

- Economical
- Good choice for IT infrastructure and permanent installations
- Fragile connector must be handled carefully to avoid damage and contamination
- Small plastic dust-caps
- Durable 3.0 mm stainless steel armored break-outs
- Adapters / patch panels available

Available in:

2, 4, 6, 8, and 12 Fibers Reels
Single Mode & Multi Mode
Dry fiber only (without power)



ST REELS

- Economical
- Better choice for IT infrastructure and permanent installations
- More rugged than LC connectors
- Small plastic dust-caps
- Durable 3.0 mm stainless steel armored break-outs
- Adapters / patch panels available

Available in:

2, 4, 6, 8, and 12 Fibers Reels
Single Mode & Multi Mode
Dry fiber only (without power)

CABLE REELS

LIGHTWEIGHT, COMPACT, TRANSPORTABLE



Cable Features:

- » TFS DuraTAC® stainless steel armored tactical fiber is up to 10 times stronger than ordinary fiber cables without compromising flexibility
- » Highly flexible bend-tolerant construction for multiple deployments
- » High impact and crush resistance
- » Very durable in high traffic areas
- » Performance in wide temperature range of -56°C to +85°C

Reel Features:

- » Strong and compact construction
- » Designed for rapid deployment of variable cable lengths
- » Adjustable drag brake
- » Direct Crank Rewind
- » Larger capacity reels include wheels and pull-out handle



BULLSEYE™

- Offers better protection against contamination and damage during repeat field deployment
- LC connector installed within a water-proof aluminum housing
- Aluminum one piece dust-cap offers excellent protection
- Adapters / patch panels available

Available in:

2 Fibers Reels
Single Mode
Dry fiber only (without power)



MAGNUM™

- Best choice for remote video production and field deployment
- Features a female connector to significantly prevent damage or contamination if mishandled
- Stainless-steel waterproof dust-cap.
- Adapters / patch panels available
- Available in hybrid fiber plus power assemblies

Available in:

2, 4, and 16 Fibers Reels
Single Mode
Dry and hybrid fiber (with power)

TFS DURATAC® STAINLESS STEEL ARMORED TACTICAL FIBER CABLE REELS

With LC Connectors | SM or MM | Includes Reel

TFS cables terminated with plastic LC connectors are very economical but the connectors are fragile and provide poor protection against contamination unless their small plastic dust caps are in place during deployment. Cables with LC connectors are terminated with small 3.0mm diameter break-outs that are not well suited to the rigors of repeat field deployment and recovery unless handled very carefully. LC cables are a good choice for permanent installations, but for repeat field deployment we recommend upgraded TFS cables terminated with Magnum™ or BullsEye™ connectors.



Cable Features:

- » Up to 10 times stronger than competitive cables
- » Flexible bend-tolerant construction allows for multiple deployments
- » Durable and crush resistant in high traffic areas
- » Performance in wide temperature range of -56°C to +85°C

Reel Features:

- » Strong and compact construction
- » Designed for rapid deployment of variable cable lengths
- » Adjustable drag brake and direct crank rewind

	FIBERS	250'	500'	750'	1000'	1250'	1500'	1750'	2000'
MULTI OM3 SINGLE	2	\$395.95	\$530.95	\$1,094.95	\$1,122.95	\$1,320.45	\$1,494.95	\$1,635.95	\$1,795.95
	4	\$499.95	\$797.95	\$1,315.95	\$1,439.95	\$1,756.95	\$1,975.95	\$2,226.95	\$2,389.95
	8	\$744.95	\$1,354.95	\$1,744.95	\$2,174.95	\$2,344.95	\$2,894.95	\$3,244.95	\$3,334.95
	12	\$825.95	\$1,595.95	\$1,895.95	\$2,276.95	\$2,560.95	\$2,988.95	\$3,321.95	\$3,653.95
	2	\$574.25	\$1,088.25	\$1,438.75	\$2,134.75	\$2,558.00	\$3,021.75	\$3,445.00	\$3,869.25
	4	\$1,079.25	\$1,849.75	\$2,592.75	\$3,010.25	\$3,651.75	\$4,331.50	\$4,973.25	\$5,343.50
	8	\$1,349.75	\$2,699.25	\$3,899.25	\$5,199.25	\$5,799.50	\$6,999.00	\$7,799.75	\$8,599.25
	12	\$1,482.75	\$2,766.25	\$4,155.25	\$5,699.15	\$6,026.00	\$7,205.75	\$8,318.75	\$9,430.75

*For inquiries about custom cable length, please call (877) 777- 7147 or sales@tacticalfiber.com

APPLICATIONS!

- » Remote Video Production & Broadcasting
- » Field deployment in rugged environments
- » Temporary installation of critical communications lines requiring fast deployment and retrieval .
- » High Traffic areas
- » Security and Sensing applications
- » Installations in harsh environments

LC CABLE ACCESSORIES

LC INLINE CABLE COUPLER SM OR MM - 2 FIBERS

Join two LC cables together with an LC Inline Cable Coupler!

2LCCOUPLER Price \$18.95



LC CHASSIS MOUNT SM OR MM

Mounts to any patch panel with standard "D" style cut-outs!

2LCPPCONTR Price \$18.95



ST DUO MALE TO LC DUO FEMALE ADAPTER SM OR MM - 3 FOOT

Converts a cable terminated with Duplex LC connectors to a cable with ST breakouts.

2STM2LCF-APTR Price \$33.25

ST CABLE REELS



TFS DURATAC® STAINLESS STEEL ARMORED TACTICAL FIBER CABLE REELS

With ST Connectors | SM or MM | Includes Reel

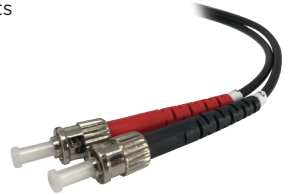
Featuring TFS DuraTAC® stainless steel armored tactical fiber cable up to 10 times stronger than ordinary tactical cables without compromising flexibility. These cables are terminated with premium quality ST connectors and durable 3.0mm furcation tubing. Delivered on strong but lightweight reels designed for tactical fiber cable.

Cable Features:

- » Up to 10 times stronger than competitive cables
- » Flexible bend-tolerant construction allows for multiple deployments
- » Durable and crush resistant in high traffic areas
- » Performance in wide temperature range of -56°C to +85°C

Reel Features:

- » Strong and compact construction
- » Designed for rapid deployment of variable cable lengths
- » Adjustable drag brake and direct crank rewind



	FIBERS	250'	500'	750'	1000'	1250'	1500'	1750'	2000'
SINGLE	2	\$395.95	\$530.95	\$1,094.95	\$1,122.95	\$1,320.45	\$1,494.95	\$1,635.95	\$1,795.95
	4	\$499.95	\$797.95	\$1,315.95	\$1,439.95	\$1,756.95	\$1,975.95	\$2,226.95	\$2,389.95
	8	\$744.95	\$1,354.95	\$1,744.95	\$2,174.95	\$2,344.95	\$2,894.95	\$3,224.95	\$3,334.95
	12	\$825.95	\$1,595.95	\$1,895.95	\$2,276.95	\$2,560.95	\$2,988.95	\$3,321.95	\$3,653.95
MULTI OM3	2	\$574.25	\$1,088.25	\$1,438.75	\$2,134.75	\$2,558.00	\$3,021.75	\$3,445.00	\$3,869.25
	4	\$1,079.25	\$1,849.75	\$2,592.75	\$3,010.25	\$3,651.75	\$4,331.50	\$4,973.25	\$5,343.50
	8	\$1,349.75	\$2,699.25	\$3,899.25	\$5,199.25	\$5,799.50	\$6,999.00	\$7,799.75	\$8,599.25
	12	\$1,482.75	\$2,766.25	\$4,155.25	\$5,699.15	\$6,026.00	\$7,205.75	\$8,318.75	\$9,430.75

*For inquiries about custom cable length, please call (877) 777- 7147 or sales@tacticalfiber.com



ST CABLE ACCESSORIES

STANDARD WALL PLATE WITH DUPLEX ST CONNECTOR SM OR MM

2STWP Price \$47.45

DUPLEX ST PATCH PANEL SM OR MM

4 port Duplex ST Patch Panel can be used as a 4 port Duplex ST or 8 port single ST patch panel. 8 port Duplex ST Patch Panel can be used as an 8 port ST duplex or 16 port single ST patch panel.

2STPATPAN4 4 port Duplex Price \$189.95

2STPATPAN8 8 port Duplex Price \$284.95



PATCH AND ADAPTER CABLES SM OR MM - 3 FOOT

- 1STM1LCM** ST Single Male to LC Single Male Patch Cable Price \$19.95
- 2STM2LCM** ST Duo Male to LC Duo Male Patch Cable Price \$28.45
- 2STM2STM** ST Duo Male to ST Duo Male Patch Cable Price \$28.45
- 2STM2LCF-APTR** ST Duo Male to LC Duo Female Adapter Price \$33.25
- 2STF2LCM-APTR** ST Duo Female to LC Duo Male Adapter Price \$33.25



ST CHASSIS MOUNT SM OR MM

Mounts to any patch panel with standard "D" style cut-outs!

2STPPCONTR Price \$28.95



ST INLINE CABLE COUPLER - 2 FIBERS

Join two ST cables together with an ST Inline Cable Coupler!

2STCOUPLER Price \$28.45



TFS DURATAC® STAINLESS STEEL ARMORED TACTICAL FIBER CABLE REEL

With Anodized Aluminum BullsEye™ Connectors | 2 Fibers | Single Mode | Includes Reel

TFS DuraTAC® Stainless Steel armored tactical fiber cables terminated with BullsEye™ connectors provide good protection against contamination and damage. Connectors are equipped with waterproof aluminum dust covers attached to cable ends. Delivered on lightweight but strong cable reel designed for tactical fiber cable. TFS BullsEye™ cables and accessories are recommended for ATEM Camera Converters equipped with TFS BullsEye™ Cable adapters and fiber converter systems adapted for BullsEye™ cables using BullsEye™ cable adapters and patch panels.

Cable Features:

- » Up to 10 times stronger than competitive cables
- » Durable water-proof aluminum connector and dust-cap
- » Flexible bend-tolerant construction allows for multiple deployments
- » Highly durable and crush resistant in high traffic areas
- » Performance in wide temperature range of -56°C to +85°C

Reel Features:

- » Strong and compact construction
- » Designed for rapid deployment of variable cable lengths
- » Adjustable drag brake and direct crank rewind



FIBERS	250'	500'	750'	1000'	1250'	1500'	1750'	2000'
2	\$755.25	\$945.25	\$1,135.25	\$1,325.25	\$1,562.75	\$1,752.75	\$1,942.75	\$2,132.75

*For inquiries about custom cable length, please call (877) 777- 7147 or email sales@tacticalfiber.com

BULLSEYE™ ACCESSORIES

TFS BULLSEYE™ DUO CHASSIS CONNECTOR W/ PATCH CABLE - 2 LC BREAKOUT

Enables TFS BullsEye™ connectors to be easily adapted to any fiber connector.

2BEPPCONTR **Price \$85.45**



4 PORT BULLSEYE™ PATCH PANELS

TFS BullsEye™ Patch Panel converts TFS BullsEye™ sockets into dual LC or ST breakouts when paired with either LC-LC or LC-ST patch cables. Use it with camera converters modified with TFS BullsEye™ Cable Adapter kits and TFS Tactical Fiber cables with BullsEye™ connectors.



- 2BEPATPAN4** 4 Port Patch Panel w/ 4 Duo Chassis **Price \$208.95**
- 2BEPATPAN4LC** 4 Port Patch Panel w/ 4 Duo Chassis & Patch Cables w/ LC Breakouts **Price \$284.95**
- 2BEPATPAN4ST** 4 Port Patch Panel w/ 4 Duo Chassis & Patch Cables w/ ST Breakouts **Price \$284.95**

8 PORT BULLSEYE™ PATCH PANELS

TFS BullsEye™ Patch Panel converts TFS BullsEye™ sockets into dual LC or ST breakouts when paired with either LC-LC or LC-ST patch cables. Use it with camera converters modified with TFS BullsEye™ Cable Adapter kits and TFS Tactical Fiber with BullsEye™ connectors.



- 2BEPATPAN8** 8 Port Patch Panel w/ 8 Duo Chassis **Price \$322.95**
- 2BEPATPAN8LC** 8 Port Patch Panel w/ 8 Duo Chassis & Patch Cables w/ LC Breakouts **Price \$474.95**
- 2BEPATPAN8ST** 8 Port Patch Panel w/ 8 Duo Chassis & Patch Cables w/ ST Breakouts **Price \$474.95**

BULLSEYE™ ACCESSORIES



TFS BULLSEYE™ CABLE ADAPTER FOR ATEM CAMERA CONVERTER

with Patch Cable

Converts the fragile duplex LC socket on the Camera Converter to a durable TFS BullsEye socket. Converted Camera Converter will connect to TFS BullsEye cables terminated with durable TFS BullsEye connectors.

2BECABMCC Price \$325.00

TFS BULLSEYE™ CABLE ADAPTER FOR ATEM CAMERA CONVERTER

with Patch Cable and Tripod Clamp

TFS's patent pending BullsEye™ Cable Adapter for Blackmagic ATEM camera converter converts the fragile duplex LC socket on the ATEM Camera Converter to a much more robust TFS BullsEye™ socket for use with TFS DuraTAC® stainless steel armored tactical fiber cables terminated with heavy duty TFS BullsEye™ connectors. These connectors provide excellent durability and protection against dirt and contamination. Includes a clamp to mount the camera converter to a tripod.

2BECABMCC-TP Price \$375.00



TFS BULLSEYE™ CABLE ADAPTER FOR BM STUDIO CAMERAS

With Patch Cable

TFS's patent pending BullsEye™ Cable Adapter for the Blackmagic ATEM Studio Camera converts its fragile duplex LC socket to a much more robust TFS BullsEye™ socket for use with TFS DuraTAC® stainless steel armored tactical fiber cables terminated with heavy duty TFS BullsEye™ connectors. TFS BullsEye™ connectors provide excellent durability and protection against dirt and contamination and a better choice than LC or ST connectors.

2BECABMSC Price \$94.95

TFS BULLSEYE™ CABLE ADAPTER

With Patch Cable and Tripod Clamp

TFS's patent pending BullsEye™ Cable Adapter converts a fragile duplex LC socket to a much more robust TFS BullsEye™ socket for use with TFS DuraTAC® stainless steel armored tactical fiber cables terminated with heavy duty TFS BullsEye™ connectors. Paired with a tripod clamp, the TFS BullsEye™ Cable Adapter can be mounted to any tripod.

1BECA-TP Price \$123.45



TFS BULLSEYE™ INLINE CABLE COUPLER

Join two TFS BullsEye™ cables together with a TFS BullsEye™ Inline Coupler!

2BECOUPLER Price \$47.25





TFS DURATAC® STAINLESS STEEL ARMORED TACTICAL FIBER CABLE REEL

**With Stainless Steel TFS Magnum™ Connectors | 2 Fibers
| Single Mode | Includes Reel**

This reel features heavy duty TFS DuraTAC® stainless steel armored tactical fiber terminated with TFS stainless steel Magnum™ connectors. TFS Magnum™ cable connectors are the very best choice for remote video production and field deployment, providing excellent strength, durability and protection against dirt and damage during remote production. TFS Magnum™ cable connectors are complete precision machined stainless steel assemblies with screw-on water proof dust-caps. Magnum™ cable-end connectors are female preventing damage and contamination to the fragile internal fibers. The ultimate cable assembly available for repeat outdoor deployment and retrieval in harsh conditions. TFS Magnum™ cables and accessories are recommended for Blackmagic-Design ATEM Camera Converters equipped with TFS Magnum™ Cable adapters or other systems adapted for Magnum™ cables using Magnum™ adapters and patch panels.

Cable Features:

- » Up to 10 times stronger than competitive cables
- » Internal fiber contacts prevent contamination and damage to fiber ends
- » Durable water-proof stainless steel connectors and dust-caps
- » Flexible bend-tolerant construction allows for multiple deployments
- » Durable and crush resistant in high traffic areas
- » Performance in wide temperature range of -56°C to +85°C

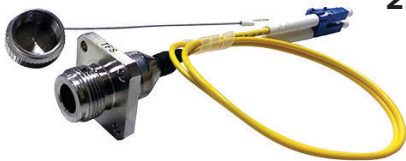
Reel Features:

- » Strong and compact construction
- » Designed for rapid deployment of variable cable runs
- » Adjustable drag brake and direct crank rewind

PAIRS WITH

TFS MAGNUM™ DUO CHASSIS CONNECTOR

Connects to Magnum™ 2 fiber cable connector with 3 foot Duplex LC break-out. Standard "D" style foot-print for patch panel installation.



2MGPPCONTR Price \$104.45

TFS MAGNUM™ INLINE CABLE COUPLER - 2 FIBERS

With Patch Cable | 2 LC Breakout

Connects two TFS Magnum™ 2 Fiber cables together

2MGCOUPLER Price \$280.25



MAGNUM™ DUO ACCESSORIES

MAGNUM™ DUO FIBER PATCH PANEL

With 4 or 8 Magnum™ Duo Chassis Connectors | With Patch Cables

TFS Magnum™ Patch Panel converts TFS Magnum™ sockets into LC Breakouts. Use it with converter systems equipped with TFS Magnum Duo Chassis Adapters and tactical fiber cables. Includes 3 foot LC Duplex patch cables.

2MGPATPAN4 (4 Port Patch Panel) **Price \$474.95**
2MGPATPAN8 (8 Port Patch Panel) **Price \$851.15**



DUO FIBER	
250 feet	\$1,040.25
500 feet	\$1,277.75
750 feet	\$1,467.75
1000 feet	\$1,705.25
1250 feet	\$2,085.25
1500 feet	\$2,322.75
1750 feet	\$2,560.25
2000 feet	\$2,797.75

*For inquiries about custom cable length, please call (877) 777- 7147

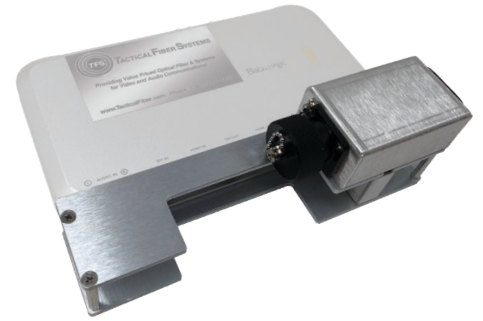
MAGNUM™ DUO ACCESSORIES

TFS MAGNUM™ CABLE ADAPTER FOR BLACK MAGIC CAMERA CONVERTER

with Patch Cable

Converts the fragile duplex LC socket on the BM ATEM Camera Converter to a TFS Magnum™ socket. Converted Camera Converter will connect to TFS DuraTAC® stainless steel armored tactical fiber cables terminated with durable TFS Magnum™ connectors. Patch cable is completely enclosed and protected.

2MGCABMCC **Price \$365.00**



TFS MAGNUM™ CABLE ADAPTER FOR BLACKMAGIC CAMERA CONVERTER

with Patch Cable and Tripod Clamp

TFS's patent pending Magnum™ Cable Adapter converts the fragile duplex LC socket on the BM ATEM Camera Converter to a much more robust TFS Magnum™ socket for use with TFS DuraTAC® stainless steel armored tactical fiber cables terminated with robust TFS Magnum™ connectors. Patch cable is completely enclosed and protected. Includes a clamp to mount the camera converter to a tripod.

2MGCABMCC-TP **Price \$415.00**



TFS MAGNUM™ CABLE ADAPTER FOR BLACKMAGIC STUDIO CAMERA

with 1 foot Duplex LC Patch Cable

TFS's patent pending Magnum™ Cable Adapter converts the fragile duplex LC socket on the Blackmagic studio camera to a much more robust TFS Magnum™ socket for use with TFS DuraTAC® stainless steel armored tactical fiber cables terminated with heavy duty TFS Magnum™ connectors.

2MGCABMSC **Price \$123.45**



TFS MAGNUM™ CABLE ADAPTER

With 3 foot Duplex LC Patch Cable and Tripod Clamp

TFS's patent pending Magnum™ Cable Adapter converts a duplex LC socket to a much more robust TFS Magnum™ socket for use with TFS DuraTAC® stainless steel armored tactical fiber cables terminated with heavy duty TFS Magnum™ connectors. Includes a clamp to mount on a tripod.

1MGCA-TP **Price \$189.95**



TFS DURATAC® STEEL ARMORED TACTICAL FIBER CABLE REELS

With Stainless Steel Magnum™ Connectors | 4 Fibers | Single Mode | Includes Reel

This reel features heavy duty TFS DuraTAC® stainless steel armored tactical fiber terminated with TFS stainless steel Magnum™ connectors. TFS Magnum™ cable connectors are the very best choice for remote video production and field deployment. TFS Magnum™ cable connectors provide excellent strength, durability and protection against dirt and damage during remote production. TFS Magnum™ cable connectors are complete precision machined stainless steel assemblies with screw-on water proof dust-caps. Magnum™ cable-end connectors are female preventing damage and contamination to the fragile internal fibers. The ultimate cable assembly available for repeat outdoor deployment and retrieval in harsh conditions.



Cable Features:

- » Up to 10 times stronger than competitive cables
- » Internal fiber contacts prevent contamination and damage to fiber ends
- » Durable water-proof stainless steel connectors and dust-caps
- » Flexible bend-tolerant construction allows for multiple deployments
- » Durable and crush resistant in high traffic areas
- » Performance in wide temperature range of -56°C to +85°C

Reel Features:

- » Strong and compact construction
- » Designed for rapid deployment of variable cable runs
- » Adjustable drag brake and direct crank rewind

MAGNUM™ QUAD ACCESSORIES

TFS MAGNUM™ QUAD CHASSIS CONNECTOR

With Patch Cable | 4 LC Breakout

Allows for TFS Magnum™ connectors to be easily adapted to any fiber connector.

4MGPPCONTR Price \$180.45



TFS QUAD MAGNUM™ INLINE CABLE COUPLER

Joins two TFS Magnum™ 4 Fiber cables together

4MGCOUPLER Price \$399.95



MAGNUM™ QUAD FIBER PATCH PANEL

With 4 or 8 Magnum™ Quad Chassis Connectors | With Patch Cables

TFS Magnum™ Patch Panel converts TFS Magnum™ sockets into LC Breakouts. Use it with converter systems equipped with TFS Magnum Duo Chassis Adapters and tactical fiber cables. Includes 3 foot LC QUAD patch cables.

2MGPATPAN4 (4 Port Patch Panel) Price \$617.45
2MGPATPAN8 (8 Port Patch Panel) Price \$949.95



QUAD FIBER	
250 feet	\$1,230.25
500 feet	\$1,467.75
750 feet	\$1,657.75
1000 feet	\$1,895.25
1250 feet	\$2,275.25
1500 feet	\$2,512.75
1750 feet	\$2,750.25
2000 feet	\$2,987.75

*For inquiries about custom cable length, please call (877) 777- 7147

MAGNUM™ 16 CABLE REELS

TFS 16 FIBER DURATAC® ARMORED TACTICAL FIBER CABLE REELS

With Stainless Steel Magnum™ Connectors | 16 Fibers | Single Mode | Includes Heavy Duty Reel on Wheels

This reel features heavy duty TFS DuraTAC® kevlar armored tactical fiber cable terminated with TFS stainless steel Magnum™ connectors. TFS Magnum™ cable connectors are the very best choice for remote video production and field deployment. TFS Magnum™ cable connectors provide excellent strength, durability and protection against dirt and damage during remote production. TFS Magnum™ cable connectors are complete precision machined stainless steel assemblies with screw-on water proof dust-caps. Magnum™ cable-end connectors are female preventing damage and contamination to the fragile internal fibers. The ultimate cable assembly available for repeat outdoor deployment and retrieval in harsh conditions.

Cable Features:

- » Up to 10 times stronger than competitive cables
- » Internal fiber contacts prevent contamination and damage to fiber ends
- » Durable water-proof stainless steel connectors and dust-caps
- » Flexible bend-tolerant construction allows for multiple deployments
- » Durable and crush resistant in high traffic areas
- » Performance in wide temperature range of -56°C to +85°C

Reel Features:

- » Heavy duty construction with wheels and pull-out handle
- » Designed for rapid deployment of variable cable runs
- » Adjustable drag brake and direct crank rewind



16 CHANNELS

500 feet \$2,495.00

1000 feet \$3,795.00

1500 feet \$4,995.00

*For inquiries about custom cable length, please call (877) 777- 7147



TFS MAGNUM™ 16 FIBER CHASSIS CONNECTOR

With Patch Cable | 16 LC Breakout

16 individual 3.0mm patch cables with LC connectors. Adaptable to ST, FC or SC connectors.

16MGPPCONTR Price \$495.00

DURATAC®

**UP TO 10 TIMES STRONGER
THAN THE COMPETITION**





MAGNUM™ HYBRID LP TACTICAL FIBER CABLE REELS

TFS DuraTAC® Armored Cables | With Low Power Magnum Hybrid Connectors

HYBRID LP

Featuring ultra-precision TFS Magnum™ machine polished fiber connectors for low power high-speed uncompressed HD video transmissions over long distances. All assemblies multi-stage machine polished and tested for <.55db RL. Built by our TFS Magnum™ trained technicians with full repair services available. Assembled with premium shielded outside broadcast cable. This cable is ideal for cameras with relatively low power requirements drawing no more than 30 watts. Ideal for PTZ CamLink® applications (See page 24), ATEM Hybrid Cable Adapters (See page 17) and low power applications.

Features:

- » Assembled with Premium DuraTAC® Cables & TFS Magnum Hybrid Connectors
- » Two fibers and two #20AWG wires assembled by trained TFS Certified Technicians
- » Cables handle up to 30 watts of DC power requirements
- » Small 5.5mm diameter cable loads on smaller reels for easier handling and storage.
- » Durable shielded TFS Magnum™ cables
- » Electrical assemblies 100% tested for continuity and shorts
- » Fiber optic assemblies 100% tested for attenuation and back reflection
- » Stainless steel assemblies and dust-caps
- » Machine polished fiber contacts ensure low insertion and return loss
- » Handles up to 12G transport

TFS LOW POWER HYBRID CABLE REELS

500 feet	\$1,705.25
1000 feet	\$2,750.25

*For inquiries about custom cable length, please call (877) 777- 7147

MAGNUM™ HYBRID LP PATCH PANEL



With 4 or 8 Magnum™ Hybrid LP Chassis Connectors Includes 6 foot Duplex Fiber & Wire Patch Cables

- 2MGHBPATPAN4** (4 Patch Panel) **Price \$470.25**
- 2MGHBPATPAN8** (8 Patch Panel) **Price \$945.25**

MAGNUM™ HYBRID LP ACCESSORIES

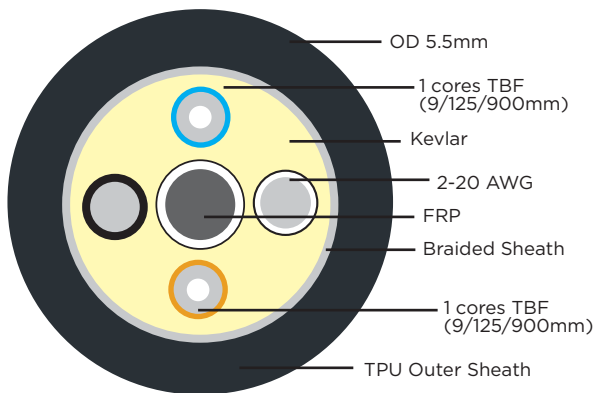


TFS MAGNUM™ HYBRID LP CHASSIS CONNECTOR

With 6 FT Duplex LC and 2 AWG 20 Wires
2MGHBPPCONTR **Price \$118.75**

TFS MAGNUM™ HYBRID LP INLINE CABLE COUPLER

Joins two TFS Magnum™ Hybrid Fiber cables together
2MGHCOUPLER **Price \$375.25**



HYBRID LP PERFORMANCE SPECS

DC Resistance	Insulation Resistance	Dielectric Strength	Optical Attenuation
Aux: 9.6 Ω/Mft Signal: 23.5 Ω/Mft Shield: 5.2 Ω/Mft	Aux: >10M Ω/km Signal: >10M Ω/km	3000V RMS	<0.50 dB/km (1250nm-1625nm)

Bend Radius	Tensile Strength	Temperature Range	Weight
6.30"	700N (min)	-20°C to 75°C	195lbs/Mft

TFS SMPTE 311M CABLE



TFS SMPTE 311M/304M HYBRID TACTICAL FIBER CABLE REELS

With DuraTAC® Armored Cable | Precision Machined Magnum SMPTE Hybrid Connectors | Includes Heavy Duty Cable Reel

Featuring ultra-precision TFS Magnum™ machine polished fiber and electrical contacts for the most demanding applications for high-speed uncompressed HD video transmissions over long distances. All assemblies multi-stage machine polished and tested for <.55db RL. Meets or exceeds SMPTE 304M/311M standards. Built by our TFS Magnum™ trained technicians with full repair services available. Assembled with premium armored SMPTE DuraTAC® outside broadcast cable. The cable is standardized by SMPTE for HDTV Broadcast camera use.



TFS SMPTE HYBRID MAGNUM™ CABLES

500 feet	\$2,275.25
750 feet	\$2,560.25
1000 feet	\$2,750.25

*For inquiries about custom cable length, please call (877) 777- 7147

Features:

- » Assembled with Premium DuraTAC® SMPTE Cables & Magnum™ Hybrid Connectors
- » Fiber and electrical terminations performed by trained TFS Certified Technicians
- » **SMPTE 311M & 304M compliant with FOUR #20AWG wires / TWO #AWG24 wires**
- » Durable steel armored TFS Magnum™ cables with small 7.1 mm Diameter
- » Electrical assemblies 100% tested for continuity and shorts
- » Fiber optic assemblies 100% tested for attenuation and back reflection
- » Stainless steel assemblies and stainless steel dust caps
- » Handles up to 12G transport
- » Machine polished fiber contacts ensure low insertion and return loss

TFS SMPTE HYBRID CHASSIS CONNECTOR

With 6 FT Duplex LC + 4 AWG 20 + 2 AWG 24 Wires

2MGSPPCONTR **Price \$259.95**

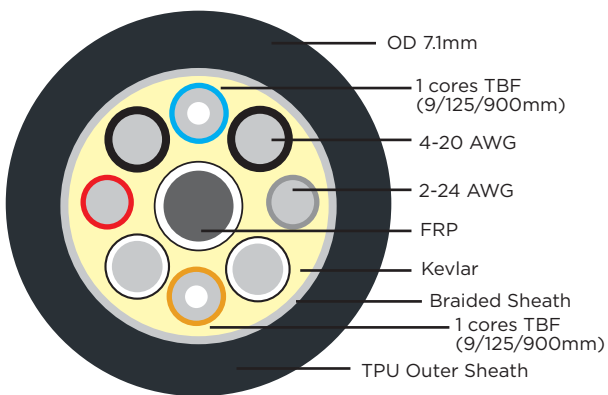
TFS MAGNUM™ SMPTE INLINE CABLE COUPLER

2MGSCOUPLER **Price \$427.45**

MAGNUM™ SMPTE PATCH PANEL

With 4/8 Magnum™ SMPTE Chassis Connectors | With 6 Ft Patch Cables

2MGSPATPAN4 **Price \$660.25**
 2MGSPATPAN8 **Price \$1,230.25**



SMPTE PERFORMANCE SPECS

DC Resistance	Insulation Resistance	Dielectric Strength	Optical Attenuation
Aux: 9.6 Ω/Mft Signal: 23.5 Ω/Mft Shield: 5.2 Ω/Mft	Aux: >10M Ω/km Signal: >10M Ω/km	3000V RMS	<0.50 dB/km (1250nm-1625nm)

Bend Radius	Tensile Strength	Temperature Range	Weight
6.30"	700N (min)	-20°C to 75°C	195lbs/Mft

LEMO SMPTE HYBRID FIBER REEL



SMPTE 311/304M Hybrid Fiber Reel | DuraTAC® Cables | Lemo Connectors

Featuring ultra-precision LEMO machine polished fiber and electrical contacts for the most demanding applications for high-speed uncompressed HD video transmissions over long distances. All assemblies multi-stage machine polished and tested for <.55db RL. Meets or exceeds SMPTE 304M/311M standards. Built by our LEMO trained technicians with full repair services available. Assembled with premium armored SMPTE DuraTAC® outside broadcast cable. The cable is standardized by SMPTE for HDTV Broadcast camera use.

Features:

- » Assembled with Premium DuraTAC® SMPTE Cables & Lemo Connectors
- » Fiber and electrical terminations performed by trained LEMO Certified Technicians
- » SMPTE 311M & 304M compliant with FOUR #20AWG wires / TWO #AWG24 wires
- » Durable steel armored TFS Magnum™ cables
- » Electrical assemblies 100% tested for continuity and shorts
- » Fiber optic assemblies 100% tested for attenuation and back reflection
- » Stainless steel assemblies with rubber dust caps
- » Handles up to 12G transport
- » Machine polished fiber contacts ensure low insertion and return loss

LEMO SMPTE FIBER CABLE REELS

500 feet	\$2,495.00
750 feet	\$2,995.00
1000 feet	\$3,695.00

*For inquiries about custom cable length, please call (877) 777- 7147



TFS LEMO SMPTE CHASSIS CONNECTOR

LC Duplex | Power Breakout Cable

Chassis connector with 6 foot duplex LC and wires to Molex connector

2LMSMPPCONTR (Male) Price \$449.95

2LMSFPPCONTR (Female) Price \$449.95

BLACKMAGIC CAMERA FIBER CONVERTER



The Blackmagic Camera Fiber Converter attaches to the back of your URSA Mini or URSA Broadcast camera. In addition to converting all of the audio, video, camera control and talkback into fiber, it also adds professional studio camera controls to the back of your camera. You get control for return feeds, dual intercom controls with the ability to mix in program audio, record, focus and iris controls, headset connectors, audio and more. The camera converter also includes a VLock mount plate on the top for attaching accessories such as a professional Blackmagic Studio Viewfinder. The Blackmagic Camera Fiber Converter has connections for your Ultra HD camera feed, 3 HD return feeds, full remote camera control, PTZ, multiple channels of talkback, tally and more! Connects via LEMO SMPTE hybrid fiber reels.

BMD-CINEURSANWFR CAM \$2,995.00



Easily connect to Blackmagic devices with Lemo SMPTE cables!



BLACKMAGIC CONVERTERS

Blackmagicdesign

converters and accessories



BLACKMAGIC ATEM CAMERA CONVERTER



This low cost converter transceives SDI and HDMI video, intercom, and tally signals. Works with Blackmagic Studio and TalkBack converters. **RECOMMENDATION:** Adapt it with a TFS Bulleye™ or Magnum™ cable adapter and use TFS BullsEye™ or Magnum™ DuraTAC® fiber cables for reliable field production. Adapter kits are available with or without a 16 hour external battery to supplement the converter's internal 4 hour battery. See pages 16-17.

BMD-CAMCONV \$595.00

BLACKMAGIC ATEM TALKBACK CONVERTER 4K

BMATC \$2,495.00



ATEM Talkback Converter 4K handles up to 8 cameras for SDI talkback using embedded audio channels 15 and 16 as used on the Blackmagic Studio Cameras and ATEM Camera Converter. Supports 12G-SDI for all SD, HD and Ultra HD formats up to 2160p60 and provides BNC connections to each camera, and an optical fiber socket for adding an optical fiber SFP module for extending camera distances when required. Includes push to talk buttons, support for tough and common aviation headsets, loop through for more than 8 camera support, built in speaker, front panel mic input and much more. (SPF sold separately. Call for info.)

BLACKMAGIC ATEM STUDIO CONVERTER 2



Connect up to four Camera Converters via optical fiber up to 28 miles away with bi-directional video plus intercom and tally! Connect your ATEM switcher program output to the ATEM Studio Converter and this is distributed to the four Camera Converters. Multiple Studio converters can be cascaded together when more than 4 cameras are needed.

BMD-STUDIOCONV \$1,995.00

INTERCOM HEADSET

For Blackmagic ATEM Camera Converters

1CCHS Price \$28.45



PROFESSIONAL HEADSET

For ATEM Studio Converter2 or BM Studio Cameras

1SCHS Price \$189.95



Blackmagicdesign



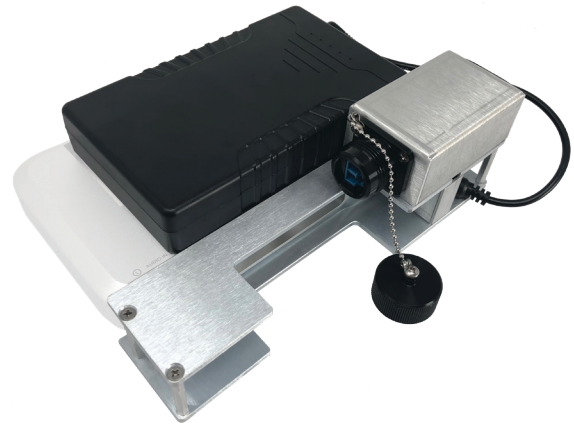
TFS BULLSEYE™ CABLE ADAPTER FOR ATEM CAMERA CONVERTER WITH 16 HR BATTERY

Converts the Duplex LC socket on BM ATEM Camera Converter to a Durable TFS BullsEye™ socket | With 16 HR Battery!

Adapted Camera Converter connect to TFS BullsEye™ cables terminated with durable TFS BullsEye™ connectors. The lithium ion battery is secured to the top of the cable adapter and powers the camera converter up to 16 hours!

- 2BECABMCC-BAT** (With Battery) **Price \$355.00**
- 2BECABMCC** (Without Battery) **Price \$325.00**

*Works with TFS BullsEye™ Cable Reels, please see page 6



TRIPOD MOUNT FOR ATEM CAMERA CONVERTER

Take the weight off your belt by mounting the ATEM camera converter to a tripod or other surface with this handy aluminum clamp and accessory kit!

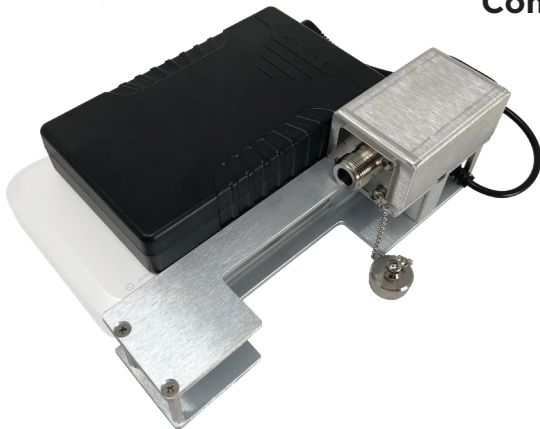
- 1TP** **Price \$47.50**



ADD THESE TRIPOD ACCESSORIES TO ANY ATEM CABLE ADAPTER!

CAMERA CONVERTERS

TFS MAGNUM™ CABLE ADAPTER FOR ATEM CAMERA CONVERTER WITH 16HR BATTERY



Converts the Duplex LC socket on BM ATEM Camera Converter to a Durable TFS Magnum™ socket | With 16 HR Battery!

Adapted Camera Converter connect to TFS DuraTAC® stainless steel armored tactical fiber cables terminated with durable TFS Magnum™ connectors. The lithium ion battery is secured to the top of the adapter and powers the camera converter up to 16 hours!

2MGCABMCC-BAT (With Battery) Price \$395.00

2MGCABMCC (Without Battery) Price \$365.00

*Works with Magnum™ Cable Reels, please see page 8

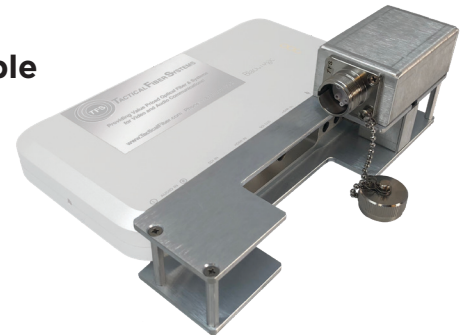
TFS MAGNUM™ HYBRID LP CABLE ADAPTER FOR ATEM CAMERA CONVERTER

Converts the Duplex LC socket on Camera Converter to a Durable TFS Low Power Magnum Hybrid socket with Cable Power

Adapted Camera Converter connects to TFS DuraTAC® armored tactical fiber cables terminated with durable TFS Magnum™ Low Power Hybrid Connectors. Provides power for the ATEM camera converter and cameras drawing less than 30 watts. Camera power cables with voltage regulators not included.

2MGHCABMCC Price \$485.00

*Works with TFS Magnum™ Hybrid LP Cable Reels, please see below and page 12



TFS MAGNUM™ HYBRID LP CABLE REELS

Armored Low Power Hybrid Cables with Magnum Connectors

500 feet **Price \$1,705.25**

1000 feet **Price \$2,750.25**

*See page 12 for additional info on Hybrid LP Cable Reels

TFS MAGNUM™ HYBRID LP BASE STATION

4 LC Connectors | 4 Magnum™ Hybrid Connectors

Hook-up your BlackMagic Studio or TalkBack Converter to the TFS Hybrid Power Base Station and use TFS Hybrid LP cables to provide connectivity and power to ATEM camera converters up to 1,000 feet away! Camera power is limited to cameras drawing less than 30 watts. Contact us to discuss your camera specs and power cable requirements. Includes four 3 foot LC Duplex patch cables for connection to BM Studio or TalkBack Converter. Camera cable not included.

2MGHBASE Price \$1,295.00



CAMLINK® PRO



**TFS CAMLINK® PRO SYSTEM 1:
SDI VIDEO & CLEARCOM**

SYSTEM 1

Sends HD/SD-SDI Video with ClearCom Intercom Connection | Hybrid Cable Powered

Fiber based transmission system for 3G-HD/SD-SDI video and ClearCom signals. Includes both Camera Converter and 1RU Rackmount Base Unit. **(Requires ClearCom Power Supply and belt-pak/headset - Not included).**

Camera Converter: Mounts on camera via standard 3/8" screw (included) or can be attached to a tripod via accessory clamp (included). Transmits 3G-HD/SD-SDI video from camera to Base Unit and transceives bi-directional ClearCom intercom signals

Base Unit: Standard 1RU 19" rack-mount. Receives 3G-HD/SD-SDI video and connects to ClearCom intercom system via XLR connector with loop-thru.

CLPRO-CC Price \$2,995.00

SPECIFICATIONS:

Camera Converter

Video - 3G-HD/SD-SDI with loop out on 2 BNC connectors
 Intercom - XLR Connector for ClearCom Belt-Pak (not included)
 Dimensions: 8" x 4" x 3" Weight: 5 lbs.
 Power - Self powered via TFS hybrid fiber cable (not included)

Base Unit

Video - 3G HD/SD-SDI Video with two identical outputs on BNC connectors
 Intercom - Connects to ClearCom Base Station or ClearCom Power Supply via XLR connector
 Dimensions - 1.75 x 19" x 10" Fits single 1RU rack space - Weight 15 lbs.
 Power - Universal 120/240 AC 60/50hz

IN THE BOX

Camlink® Pro Camera Converter
 Camlink® Pro 1RU Base Unit
 Tripod accessory clamp

**TFS CAMLINK® PRO SYSTEM 2:
SDI | CLEARCOM | IP CAM CONTROL**

SYSTEM 2

Sends HD/SD-SDI Video with ClearCom Connection | IP Connection for Camera Control | Hybrid Cable Powered

Fiber based transmission system for 3G-HD/SD-SDI video, Intercomm and IP Based Camera Control. Includes both Camera Converter and 1RU Rackmount Base Unit. **(Requires ClearCom Power Supply and belt-pak/headset - Not included).**

Camera Converter: Mounts on camera via standard 3/8" screw (included) or can be attached to a tripod via accessory clamp (included). Transmits 3G-HD/SD-SDI video from camera to Base Unit and transceives bi-directional ClearCom intercom and camera control signals via IP.

Base Unit: Standard 1RU 19" rack-mount. Receives 3G-HD/SD-SDI video. Connects to ClearCom base unit or ClearCom power supply via XLR connector with loop-thru. Connects to remote camera controller via RJ45 connector.

CLPRO-CC-IP Price \$3,495.00

SPECIFICATIONS:

Camera Converter

Video - 3G-HD/SD-SDI with loop out on 2 BNC connectors
 Intercom - XLR Connector for ClearCom Belt-Pak (not included)
 Camera Control - IP Ethernet protocol via RJ45 Connector
 Dimensions: 8" x 4" x 3" Weight: 5 lbs.
 Power - Self powered via TFS hybrid fiber cable (not included)

Base Unit

Video - 3G HD/SD-SDI Video with two identical outputs on BNC connectors
 Intercom - Connects to ClearCom Base Station or Power Supply via XLR connector
 Camera Control - IP Ethernet protocol via RJ45 Connector
 Dimensions - 1.75 x 19" x 10" Fits single 1RU rack space - Weight 15 lbs.
 Power - Universal 120/240 AC 60/50hz

IN THE BOX

Camlink® Pro Camera Converter
 Camlink® Pro 1RU Base Unit
 Tripod accessory clamp

*** NOTE: Camera converter is powered by TFS Hybrid LP fiber cable (not included). Camera converter does not provide camera or camera accessory power that must be provided by camera battery or external power supply.**

CAMLINK® CONVERTERS

SYSTEM 3

BEST VALUE!

**TFS CAMLINK® PRO SYSTEM 3:
CLEARCOM + CAM CONTROL WITH TALLY**

Sends HD/SD-SDI video with ClearCom Connection | Serial Data Connection for Camera Control and Tally Function | Hybrid Cable Powered

Fiber based transmission system for 3G-HD/SD-SDI video, Intercom, Serial Data Camera Control and Tally function. Includes both Camera Converter and 1RU Rackmount Base Unit. **(Requires ClearCom Power Supply and belt-pak/headset - Not included).**

Camera Converter: Mounts on camera via standard 3/8" screw (included) or can be attached to a tripod via accessory clamp (included). Transmits 3G-HD/SD-SDI video from camera to Base Unit. Receives ClearCom intercom, camera control and tally.

Base Unit: Standard 1RU 19" rack-mount. Receives 3G-HD/SD-SDI video. Connects to ClearCom base unit or power supply via XLR connector with loop-thru. Connects to remote camera controller via RJ45 connector. Connects to switcher's tally connection via a 3.5 mm socket.

CLPRO-CC-DT Price \$3,995.00

SPECIFICATIONS:

Camera Converter

Video - 3G-HD/SD-SDI with loop out on 2 BNC connectors
Intercom - XLR Connector for ClearCom Belt-Pak (not included)
Camera Control - Serial data RS232/422/425 protocol via RJ45 Connector
Tally - Red lights on front and rear. 3.5mm Connector.
Dimensions: 8" x 4" x 3" Weight: 5 lbs.
Power - Self powered via TFS hybrid fiber cable (not included)

Base Unit

Video - 3G HD/SD-SDI Video with two identical outputs on BNC connectors
Intercom - Connects to ClearCom Base Station or Power Supply via XLR connector
Camera Control - Serial data RS232/422/425 protocol via RJ45 Connector
Tally - Red lights on front and rear. 3.5mm Connector for connection to switcher tally trigger
Dimensions - 1.75 x 19" x 10" Fits single 1RU rack space - Weight 15 lbs.
Power - Universal 120/240 AC 60/50hz

IN THE BOX

Camlink® Pro Camera Converter w/ accessory Tripod clamp
Camlink® Pro 1RU Base Unit

**ATTACH
THE CAMLINK
CONVERTER TO
YOUR CAMERA
OR TRIPOD!**



**TFS MAGNUM™ HYBRID
CHASSIS CONNECTOR**

**With Patch Cable | 2 LC
3 Wires**

Allows for TFS Magnum™ connectors to be easily adapted to any fiber connector.

2MGHPPCONTR .. Price \$180.45



CAMLINK® ACCESSORIES

MAGNUM™ HYBRID LP TACTICAL FIBER REEL

TFS Armored Low Power Hybrid Cable | Magnum Connectors | Includes Reel

500 feet \$1,705.25
1000 feet \$2,750.25

*For more information, check page 12



TFS MAGNUM™ HYBRID INLINE CABLE COUPLER

Connect two TFS Magnum™ Hybrid Fiber cables together with a TFS Magnum™ Hybrid Fiber Inline Cable Coupler!

2MGHCOUPLER Price \$474.95

*** NOTE: Camera converter is powered by TFS Hybrid LP fiber cable (not included). Camera converter does not provide camera or camera accessory power that must be provided by camera battery or external power supply.**



TFS CAMLINK® PLUS ALL-IN-1 REEL / 3G-SDI SYSTEM WITH BATTERY POWER

Built-in 3G-HD/SD-SDI Transmitter | 3G-HD/SD-SDI Receiver | AC/DC Power Supply and Lithium Ion Battery | With TFS 2 Fiber DuraTAC™ Stainless Steel Armored Cable

The TFS CamLink® Plus All-In-1 system is a battery powered fiber based video transmission perfect for sports or events requiring long cable runs and without local power at camera positions. CamLink® models are available with 500, 1000, 1500 or 2,000 feet of premium quality dual core TFS DuraTAC® stainless steel armored tactical fiber optic cables terminated with stainless steel TFS Magnum™ connectors. It also has a Lithium Ion Battery.

A 3G-HD/SD-SDI fiber converter/transmitter installed and protected within the cable reel hub sends video with or without embedded audio over a single core tactical fiber cable. Two BNC connectors for video input and loop-out are conveniently located on the cable-reelhub for connection to camera and accessories. Up to 300 feet of conventional coax cable can also be used to connect camera to the Camlink® Reel as desired.

On the Studio side, a 3G-HD/SD-SDI fiber converter/receiver powered by an AC/DC power supply delivers perfect HD/SD-SDI to video switchers or other devices via TWO redundant BNC connectors. An optional 1RU rack-mount panel with space for installing up to four receiver/converters is available. The CamLink® Plus system featuring TFS DuraTAC® stainless steel armored cable and Magnum™ connectors is a highly durable cost effective solution for producers using wireless intercoms or when intercoms are not required.

- » TFS CamLink® tactical fiber cable reel with built-in 3G-HD/SD-SDI Fiber Optic Converter/Transmitter
- » Lithium Ion Battery
- » TFS Dual Core DuraTAC® Stainless Steel Armored Tactical Fiber Cable with Stainless Steel Magnum™ Connector installed on durable cable reel (500 / 1000 / 1500 / 2000 feet depends on model)
- » TFS 3G-HD/SD-SDI Fiber Optic Converter/ Receiver
- » One 120AC/12VDC power supply for receiver and transmitter
- » Complete easy to follow operational instructions

CAMLINK PLUS ALL-IN-1 REEL / 3G-SDI SYSTEM

500 feet	\$2,085.25
1000 feet	\$2,465.25
1500 feet	\$2,845.25
2000 feet	\$3,255.25

CAMLINK® ACCESSORIES

DURATAC® ARMORED TACTICAL FIBER REEL



TFS Stainless Steel DuraTAC® | With Magnum™ Connectors | 2 Fibers | Includes Reel

DUO FIBERS

500 feet	\$1,277.75
1000 feet	\$1,705.25
1500 feet	\$2,322.75

*Additional cable lengths available
See page 8

CAMLINK® PLUS PATCH PANEL

With space for up to Four Camlink™ 3G-SDI Fiber Receivers and Magnum™ Chassis Connectors



1CLPSRM **Price \$94.95**

TFS MAGNUM™ INLINE CABLE COUPLER - 2 FIBERS

Joins two TFS DuraTAC® Magnum™ Duo Fiber cables together.

2MGCOUPLER .. Price \$280.25



CAMLINK® ALL-IN-1 Hybrid Systems

Includes reel and base station!



500 FOOT CAMLINK® PRO ALL-IN-1 REEL WITH BASE STATION*

With 3G-SDI | ClearCom Connection **SYSTEM 1**

Fiber based transmission system for 3G-HD/SD-SDI video and ClearCom signals. Includes both All-In-1 Reel with 500' hybrid tactical fiber cable and 1RU Rackmount Base Unit. **(Requires ClearCom Power Supply and belt-pak/headset - Not included).**

All-In-1 Reel: Transmits 3G-HD/SD-SDI video from camera to Base Unit and transceives bi-directional ClearCom intercom signals

Base Unit: Standard 1RU 19" rack-mount. Receives 3G-HD/SD-SDI video and connects to ClearCom intercom system via XLR connector with loop-thru.

CLRL-PRO Price \$5,220.25

SPECIFICATIONS:

All-In-1 Reel

- Video - 3G-HD/SD-SDI with loop out on 2 BNC connectors
- Intercom - XLR Connector for ClearCom Belt-Pak (not included)
- Cable - Hybrid Tactical Fiber
- Dimensions: 18" x 18" x 12" Weight: 35 lbs.
- Power - Self powered via TFS hybrid fiber cable

Base Unit

- Video - 3G HD/SD-SDI Video with two identical outputs on BNC connectors
- Intercom - Connects to ClearCom Base Station or Power Supply via XLR connector
- Dimensions - 1.75 x 19" x 10" Fits single 1RU rack space - Weight 15 lbs.
- Power - Universal 120/240 AC 60/50hz

500 FOOT CAMLINK® PRO ALL-IN-1 REEL WITH BASE STATION*

With 3G-SDI | ClearCom Connection **SYSTEM 2** Plus IP Based Camera Control

Fiber based transmission system for 3G-HD/SD-SDI video, ClearCom and IP based remote camera control signals. Includes both All-In-1 Reel with 500' hybrid tactical fiber cable and 1RU Rackmount Base Unit. **(Requires ClearCom Power Supply and belt-pak/headset - Not included).**

All-In-1 Reel: Transmits 3G-HD/SD-SDI video from camera to Base Unit and transceives bi-directional ClearCom intercom and remote camera control signals

Base Unit: Standard 1RU 19" rack-mount. Receives 3G-HD/SD-SDI video. Connects to ClearCom intercom system via XLR connector with loop-thru and remote camera control via RJ50 connector.

CLRL-PRO-IP Price \$5,695.25

SPECIFICATIONS:

All-In-1 Reel

- Video - 3G-HD/SD-SDI with loop out on 2 BNC connectors
- Intercom - XLR Connector for ClearCom Belt-Pak (not included)
- Remote Camera Control - IP Ethernet Protocol via RJ45 connector
- Cable - Hybrid Tactical Fiber
- Dimensions: 18" x 18" x 12" Weight: 35 lbs.
- Power - Self powered via TFS hybrid fiber cable

Base Unit

- Video - 3G HD/SD-SDI Video with two identical outputs on BNC connectors
- Intercom - Connects to ClearCom Base Station or Power Supply via XLR connector
- Remote Camera Control - IP Ethernet Protocol via RJ45 connector
- Dimensions - 1.75 x 19" x 10" Fits single 1RU rack space - Weight 15 lbs.
- Power - Universal 120/240 AC 60/50hz

* NOTE: Requires ClearCom Base Station and belt-pak/headset - Not included). All-In-1 Reel does not provide camera or accessory power.

500 FOOT CAMLINK® PRO ALL-IN-1 REEL WITH BASE STATION* **SYSTEM 3**

With 3G-HD/SD-SDI | Intercom | RS422/485 Serial Camera Control and Tally Function

Fiber based transmission system for 3G-HD/SD-SDI video, ClearCom, serial data based remote camera control signals and tally function. Includes both All-In-1 Reel with 500' hybrid tactical fiber cable and 1RU Rackmount Base Unit. (Requires ClearCom Power Supply and belt-pak/headset - Not included).

All-In-1 Reel: Transmits 3G-HD/SD-SDI video from camera to Base Unit, provides power and intercom signal to ClearCom belt pak, receives serial data camera control and tally signals.

Base Unit: Standard 1RU 19" rack-mount. Receives 3G-HD/SD-SDI video. Transmits ClearCom intercom signal, serial data for remote camera control and tally function.

CLRL-PRO-DT Price \$6,170.25

SPECIFICATIONS:

All-In-1 Reel

- Video - 3G-HD/SD-SDI with loop out on 2 BNC connectors
- Intercom - XLR Connector for ClearCom Belt-Pak (not included)
- Remote Camera Control - RS232/422/425 Serial Data via RJ45 connector
- Tally - Connects to camera tally trigger via 3.5mm jack
- Cable - Hybrid Tactical Fiber
- Dimensions: 18" x 18" x 12" Weight: 35 lbs.
- Power - Self powered via TFS hybrid fiber cable

Base Unit

- Video - 3G HD/SD-SDI Video with two identical outputs on BNC connectors
- Intercom - Connects to ClearCom Base Station or Power Supply via XLR connector
- Remote Camera Control - RS232/422/425 Serial Data via RJ45 connector
- Tally - Connects to switcher open collector tally trigger via 3.5mm jack
- Dimensions - 1.75 x 19" x 10" Fits single 1RU rack space
- Weight 15 lbs.
- Power - Universal 120/240 AC 60/50hz



TFS MAGNUM™ INLINE HYBRID CABLE COUPLER

Connect two TFS Magnum™ Hybrid Fiber cables together with a TFS Magnum™ Hybrid Fiber Inline Cable Coupler!

2MGHCOUPLER Price \$375.25

* NOTE: Requires ClearCom Base Station and belt-pak/headset - Not included). All-In-1 Reel does not provide camera or accessory power.

TAKING PTZ CAMERAS TO THE NEXT LEVEL

See Page 24



FIBER CONVERTERS

TFS 4K VIDEO "SNIPER" SYSTEM TRANSMITTER / RECEIVER PAIR

Four 3G-HD/SD-SDI or One 4K Video Signal over a Single Fiber

This is an ideal solution for the transmission of multiple uncompressed SDI or one 4K video signal up to 12.5 miles with zero losses. Send up to 4 individual 3G-HD/SD-SDI Camera signals on One Single Mode Fiber terminated with an ST connector.



- » Each SDI channel is fully independent
- » SD, HD, 3G input auto identification
- » Supports SMPTE-420M 3Gbps HD-SDI, SMPTE-292M HD-SDI, SMPTE-259M SDI
- » Up to 12.5 miles on Single Mode Fiber cable with ST connector

PACKAGE INCLUDES

- » Fiber transmitter
- » Fiber receiver
- » AC/DC Power supplies

4KHD3GSDIF (Pair)..... Price \$2,845.25

TFS 3G-SDI VIDEO & RS485 DATA TRANSMITTER / RECEIVER PAIR

- » Long Distance 3G-SDI video and RS-485 Camera Control over 1 single mode fiber cable terminated with a LC connector.
- » Ideal for connectivity between studio and manned cameras with remote camera control or unmanned PTZ cameras
- » Distance: Up to 12.5 miles
- » Includes: Transmitter, Receiver and 2 power supplies



CL3GSDIRS485F (Pair) Price \$755.25

TFS 3G-SDI VIDEO "BULLET" TRANSMITTER / RECEIVER PAIR

BULLET SDI: The TFS SDI Bullet is a compact, cost-effective 3G-SDI over Fiber Optic transmission system designed for long cable runs up to 12.5 miles and the perfect choice when looking for a value priced solution for sports, ENG and live event venues. System includes transmitter, receiver and two power supplies.

BULLET 4K: The 12G SDI to fiber converter supports the new 4K 60fps SDI format. Handles SMPTE ST-2082, ST-2081, 424M, 344M, 292M, 259M, DVB-ASI serial digital video without loss or delay . With advanced digital fiber optic transmission technology and duplex LC connector.

1BULLETSDI (Pair) Price \$549.95

1BULLET4K (Pair) Price \$1,420.25

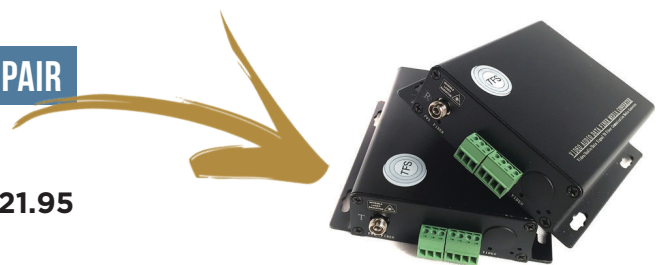
BEST-SELLER



TFS CAMERA CONTROL & TALLY TRANSMITTER / RECEIVER PAIR

- » RS422/485 serial data for remote camera shading controls
- » Closed contact relay for tally light control

2BMCCRCTY (Pair) Price \$721.95



TFS 1 GIGABIT MEDIA CONVERTER TRANSMITTER / RECEIVER PAIR

TFS 1Gig Ethernet Media Converter

1FIOT (Pair) Price \$379.95

SENDS 3G HD VIDEO, AUDIO, CAMERA CONTROL AND POWER UP TO 2,000 FEET!



**TWO MODELS
WITH OR WITHOUT POWER**

Works with ANY
PTZ camera with
SDI video output



**PTZ CAMLINK® 2000
Requires Local Power**

- » Complete system includes Base Unit and Camera Module
- » 3G HD-SDI video, audio, and camera control using virtually unlimited lengths of TFS Magnum™ “Dry” non-powered tactical fiber cable.
- » Local power for camera module & camera required using included AC/DC supply or optional battery pak.
- » Compatible with any PTZ camera with HD-SDI video out IP or Serial Camera Control. (Specify with order)
- » Includes FREE Shot-Gun Mic with mount.. provides line level audio at Base Unit
- » Includes Quick release camera mount
- » Durable aluminum water resistant case
- » 3 Year Warranty

PTZ-CL2000 \$3,995.00

**PTZ CAMLINK® 2000P
With Camera Power**

- » Complete system includes Base Unit and Camera Module
- » 3G HD-SDI video, audio, and camera control and POWER up to 2,000 feet over TFS Magnum™ HYBRID LP tactical cable.
- » Compatible with any PTZ camera with HD-SDI video out
- » IP or Serial Camera Control. (Specify with order)
- » Includes FREE Shot-Gun Mic with mount.. provides line level audio at Base Unit
- » Includes Quick release camera mount
- » Durable aluminum water resistant case
- » 3 Year Warranty

PTZ-CL2000P \$4,495.00

TFS MAGNUM™ INLINE CABLE COUPLER - 2 FIBERS

Joins two TFS Magnum™ 2 Fiber cables together.

2MGCOUPLER Price \$280.25



DURATAC® ARMORED TACTICAL FIBER REEL



DUO FIBERS

500 feet	\$1,277.75
1000 feet	\$1,705.25
1500 feet	\$2,322.75

*For more cable sizes, check page 8

MAGNUM™ HYBRID LP TACTICAL FIBER REEL

DUO FIBERS / DUO WIRES

500 feet	\$1,705.25
1000 feet	\$2,750.25

*For more information, check page 12



TFS MAGNUM™ HYBRID LP CABLE COUPLER



Joins two TFS Magnum Hybrid Cables together for extended cable length. Heavy duty water-resistant design.

MGHLCC Price \$375.25

FIBERBACK SYSTEMS

CAMLINK® 380 FIBERBACK SYSTEM

for Panasonic AJ-PX380 Cameras

Enables long distance fiber based transmission between Panasonic PX-380 and Panasonic BS-300 Base Unit via durable / lightweight TFS DuraTAC® tactical fiber cable up to 15 miles! Transmits 3G-SDI video, return video, intercom, genlock and remote camera control. Fiber back attaches directly to PX-380 A/B mount.

INCLUDES

- » One Camlink® Fiberback Transmitter
- » One 1RU Base Unit with 1 Receiver Module plus 3 open slots for 3 more modules

FEATURES

- » CamLink® Fiber Back with premium TFS Magnum™ chassis connector.
- » CamLink® Fiber Back attaches directly to PX-380 A/B mount
- » 1RU Camlink® Base Module supports up to 4 camera modules
- » Indicator lights on CamLink® Base Unit and Fiber Back for power and optical link
- » Virtually unlimited distances via TFS DuraTAC® cable!

CLFB-380 \$2,995.00

FIBERBACK ACCESSORIES

TFS DURATAC® STEEL ARMORED TACTICAL FIBER CABLE REELS

With Stainless Steel Magnum™ Connectors | 2 Fibers | Single Mode | With Reel

This reel features heavy duty TFS DuraTAC™ stainless steel armored tactical fiber terminated with TFS stainless steel Magnum™ connectors. TFS Magnum™ cable connectors are the very best choice for remote video production and field deployment.

DUO FIBER

500 feet	\$1,277.75
1000 feet	\$1,705.25
1500 feet	\$2,322.75
2000 feet	\$2,797.75

*For more cable sizes, check page 8



CAMLINK® 3G SDI VIDEO ONLY FIBERBACK

Base Unit Package

Low cost system for transmitting 3G-SDI video from ENG cameras with A/B or V mounts. Uses durable / lightweight TFS DuraTAC® tactical fiber cables to deliver 3G-SDI video over virtually unlimited distances!

INCLUDES

- » One Camlink® FiberBack Transmitter
- » One 1RU Base Unit with 1 Receiver Module plus 3 open slots for 3 more modules

FEATURES

- » Camera Back with 3G-SDI input and loop-out
- » 1RU Receiver with two identical 3G-SDI outputs
- » Receiver has space for 3 more camera modules
- » Virtually unlimited distances via TFS DuraTAC® cable
- » CamLink® Fiber Back can be powered by A/B or V Mount Battery

CLFB-3GSDI-AB \$2,995.00

CLFB-3GSDI-V \$2,995.00

MAGNUM™ DUO FIBER PATCH PANEL

With 4 or 8 Magnum™ Duo Chassis Connectors
Includes 3 foot Duplex LC Patch Cables

2MGPATPAN4 (4 Port Patch Panel) Price \$474.95

2MGPATPAN8 (8 Port Patch Panel) Price \$851.15



ADDITIONAL CAMERA KIT FOR CAMLINK® FIBERBACK

Each kit includes 1 additional module option for installation within the CamLink® 1 RU Base Module.

INCLUDES

- » 1 CamLink® FiberBack
- » 1 Base module fiber card with BNC connectors
- » 1 Magnum™ fiber chassis connector with patch cable
- » Instructions to install card for base unit and fiber chassis connector in 1 RU Base Module

1ACK-CL380 \$1,995.00



NEW

CAMLINK® FIBERBACK 3G AND 4K

WITH OR WITHOUT SMPTE HYBRID POWER

Highest performance and
quality at **HALF THE PRICE**
of competitive systems!

Works with top
brand cameras

SONY

Panasonic

HITACHI

JVC



Transceives 3G or 4K Video, Intercom, Camera Control, Genlock and Tally!

Up to 1,000 feet with SMPTE Hybrid Power Cable
2000 feet and more with "Dry" Non-Powered Cable!



3G-SDI FIBERBACK & BASE UNIT with SMPTE Hybrid Cable Power

The CamLink® 3G-SDI FiberBack System transmits a 3G/HD-SDI signal from camera to the Base Unit. Receives Return Video (3G-SDI), Remote Camera Control, ClearCOM or RTS Intercom, Genlock and tally signals.

Mounts on Panasonic, SONY, JVC or Hitachi ENG style cameras with either Anton Bauer or V mounts. Connects to the CamLink® 3G Base Unit via durable tactical fiber cable with all signals transported over 2 single mode fibers.

- » Automatic cable equalization to ensure signal integrity
- » 3G/HD/SD-SDI input auto recognition, support 270Mbit/s - 2.97Gbit/s according to SMPTE 424M, SMPTE 292M and SMPTE 259M
- » Hybrid cable power supply provides up to 150 watts of power at 500 feet and 100 watts at 1,000 feet
- » Distances up to 20 miles using local power and “dry” non-powered fiber cables
- » Remote camera power supply with circuit protection
- » Remote control cable sets for Panasonic, Sony, JVC and Hitachi cameras
- » Tally outputs LED+/- or dry Contact Closure optional
- » Choice of Anton Bauer or V battery mount

CLFB-3G-PWR \$7,495.00

SMPTE HYBRID TACTICAL FIBER REEL

With TFS Steel Armored DuraTAC® cable and Magnum Connectors

SMPTE MAGNUM™ DUO

500 feet \$2,395.00

750 feet \$2,695.00

1000 feet \$2,895.00

* See page 13 for additional cable lengths



4K FIBERBACK & BASE UNIT with SMPTE Hybrid Cable Power

The CamLink® 4K FiberBack System transmits four 3G-SDI signals from camera to the Base Unit. Receives Return Analog Video or Genlock, Remote Camera Control, ClearCOM or RTS Intercom and tally signals.

Mounts on Panasonic, SONY, JVC or Hitachi ENG style cameras with either Anton Bauer or V mounts. Connects to the CamLink® 4K Base Unit via durable tactical fiber cable with all signals transported over 2 single mode fibers.

- » Automatic cable equalization to ensure signal integrity
- » 3G/HD/SD-SDI input auto recognition, support 270Mbit/s - 2.97Gbit/s according to SMPTE 424M, SMPTE 292M and SMPTE 259M
- » Hybrid cable power supply provides up to 150 watts of power at 500 feet and 100 watts at 1,000 feet
- » Distances up to 20 miles using local power and “dry” non-powered fiber cables
- » Remote camera power supply with circuit protection
- » Remote control cable sets for Panasonic, Sony, JVC and Hitachi cameras
- » Tally outputs LED+/- or dry Contact Closure optional
- » Choice of Anton Bauer or V battery mount

CLFB-4K-PWR \$9,995.00



REMOTE CAMERA CONTROL CABLES

Panasonic - Sony - JVC - Hitachi

Remote camera control cable set connects camera and remote camera control to CamLink base unit and fiber back.

PAN-CAB \$395.00

SNY-CAB \$395.00

HIT-CAB \$395.00

JVC-CAB \$395.00

MAGNUM™ HYBRID PATCH PANEL

With 4 or 8 Magnum™ Hybrid Chassis Connectors and 6 foot hybrid Duplex LC break-outs

2MGSPATPAN4 (4 Port Panel) Price \$660.25

2MGSPATPAN8 (8 Port Panel) Price \$1,230.25



3G FIBERBACK & BASE UNIT without SMPTE Power

The CamLink® 3G FiberBack System transmits a 3G/HD-SDI signal from camera to the Base Unit. Receives Return Video (3G-SDI), Remote Camera Control, ClearCOM or RTS Intercom, Genlock and tally signals.

Mounts on Panasonic, SONY, JVC or Hitachi ENG style cameras with either Anton Bauer or V mounts. Connects to the CamLink® 3G Base Unit via durable tactical fiber cable with all signals transported over 2 single mode fibers.

- » Automatic cable equalization to ensure signal quality
- » 3G SDI auto recognition, supports 270Mbit/s - 2.97Gbit/s according to SMPTE 424M, SMPTE 292M and SMPTE 259M specs
- » Uses durable TFS DURATAC tactical fiber cable up to 20 Miles! Reels available in lengths of 500 - 2000 feet. Use inline couplers for greater distances!
- » Remote control cable sets for Panasonic, Sony, JVC and Hitachi cameras
- » Tally outputs LED+/- or dry Contact Closure optional
- » Choice of Anton Bauer or V battery mount

CLFB-3G \$6,995.00

DURATAC® ARMORED TACTICAL FIBER REEL

TFS Stainless Steel DuraTAC® | With Magnum™ Connectors | 2 Fibers

DUO FIBERS

500 feet \$1,277.75

1000 feet \$1,705.25

1500 feet \$2,322.75

2000 feet \$2,797.75

*For more cable sizes, check page 8



MAGNUM™ DUO FIBER PATCH PANEL

With 4 or 8 Magnum™ Duo Chassis Connectors and 3 foot Duplex LC Patch Cables

2MGPATPAN4 (4 Port Panel) Price \$474.95

2MGPATPAN8 (8 Port Panel) Price \$851.15



4K FIBERBACK & BASE UNIT without SMPTE Power

The CamLink® 4K FiberBack System transmits four 3G SDI signals from camera to the Base Unit. Receives Return Analog Video or Genlock, Remote Camera Control, ClearCOM or RTS Intercom and tally signals.

Mounts on Panasonic, SONY, JVC or Hitachi ENG style cameras with either Anton Bauer or V mounts. Connects to the CamLink® 4K Base Unit via durable tactical fiber cable with all signals transported over 2 single mode fibers.

- » Automatic cable equalization to ensure signal quality
- » QuadLink (4 x 3G-SDI) auto recognition, supports 270Mbit/s - 2.97Gbit/s according to SMPTE 424M, SMPTE 292M and SMPTE 259M
- » Uses durable TFS DuraTAC tactical fiber cable up to 20 Miles! Reels available in lengths of 500 - 2000 feet. Use inline couplers for greater distances!
- » Remote control cable sets available for Panasonic, Sony, JVC and Hitachi cameras
- » Tally outputs LED+/- or dry Contact Closure optional
- » Choice of Anton Bauer or V battery mount.

CLFB-4K \$9,495.00

REMOTE CAMERA CONTROL CABLES



Panasonic - Sony - JVC - Hitachi

Remote camera control cable set connects camera and remote camera control to CamLink base unit and fiber back.

PAN-CAB \$395.00

SNY-CAB \$395.00

HIT- CAB..... \$395.00

JVC-CAB \$395.00

TFS MAGNUM™ DUO CHASSIS CONNECTOR

Allows for TFS Magnum™ connectors to be easily adapted to any fiber connector.



2MGPPCONTR Price \$104.45

TFS MAGNUM™ INLINE CABLE COUPLER - 2 FIBERS

With Patch Cable | 2 LC Breakout

Connect two TFS Magnum™ 2 Fiber cables together with a TFS Magnum™ 2 Fiber Inline Cable Coupler!

2MGCOUPLER Price \$280.25



FIBER CLEANING KIT



FIBER OPTIC CLEANING KIT



CAIG Laboratories Fiber Optic Cleaning Kit gives the technician everything needed to clean fiber optic connections and prepare fiber for splicing. Works with LC, SC, ST, Bullseye™, Magnum™, and Lemo fiber connectors. All of the accessories are lint free and the CAIG Fiber Cleaning Fluid is fast to evaporate and leaves no residue.

Includes CAIG’s Precision Air Duster that facilitates removal of any loose debris and other contaminants at the outset of cleaning. The multiple sizes of swabs and cleaning sticks, and the polyester cellulose wipes included in the kit allow for the cleaning of the splicer, ferrule faces/tips, sleeves and connections of different sized fibers.

- » CAIG Fiber Connecting Cleaning Fluid - 1 can, 59 ml
- » CAIG Precision Air Duster - 1 can, 4.5 oz
- » CAIG Precision Cleaning Sticks - 8 sticks, 1.25 mm
- » CAIG Precision Cleaning Sticks - 8 sticks, 2.50 mm
- » CAIG Precision Foam Swabs - 8 swabs, 1/8 x 1/2 x 2-3/4
- » CAIG Precision Foam Swabs - 8 swabs, 1/4 x 3/4 x 4-1/2
- » CAIG Fiber Optic Cleaning Cloth - 1 cloth, 2-1/2 x 3-1/2
- » Instruction Sheet

CAIGFOC \$79.95



HOW TO ORDER:

Call: (877) 777 - 7147

Email: sales@tacticalfiber.com

www.tacticalfiber.com

Tactical Fiber Systems, Inc.
1525 N.W. 3rd Street Suite 12
Deerfield Beach, Florida 33442

**WITH MILLIONS AT STAKE...
SPACEX DEPENDS ON
TFS DURATAC® FIBER
CABLES FOR EVERY
LAUNCH!**



TACTICAL FIBER SYSTEMS

TacticalFiber.com | (877) 777 - 7147

BEST VALUES ON FIBERS AT A PRICE YOU CAN AFFORD

Leader in Fiber Optic Technology